

Cumann Taisbeantais Tortha Talmhaíochta agus Tionscail Iar-Dheisceart Thír Chonaill Teo.
(S.W. Donegal Agricultural & Industrial Show Ltd.) A member of the Irish Shows Association

ARDARA SHOW



Saturday 8th August 2026
PRIZE SCHEDULE

**ENTER
ONLINE**
www.ardarashow.com

MAIN SPONSORS

McCafferty's Bars
— ireland / uk / spain / uae —



NESBITT ARMS
— boutique hotel —

Closing Date for Entries
25TH JULY 2026
All enquires to the show secretary
on ardarashow@gmail.com
087 474 3826

PLEASE ASSIST US BY GETTING YOUR ENTRIES IN EARLY

Trade stand space must be booked in advance

ARDARA SHOW 2026

*We are delighted to welcome on board
as our Main Sponsor for 2026*

McCafferty's Bars

— ireland / uk / spain / uae —



NESBITT ARMS

— boutique hotel —

A huge thank you to our 2026 Main Sponsors, McCafferty's Bars and Nesbitt Arms Hotel, for supporting the Ardara Show. We also sincerely thank Ardara Distillery for their valued support over recent years and look forward to continuing to work together. Please support the local businesses who support our community.

We have been very fortunate to have the facilities of Pearse Memorial Park, Home of the Ard an Ratha GAA Club and we are very thankful to all the committee for allowing us the use of Pearse Memorial Park on August 8th 2026.

SEE YOU ALL ON SHOW DAY!



Message from ISA National President Freda Kinnarney



It is a great privilege and honour for me to address you as President of the Irish Shows Association (ISA). Having been involved in show activities for a long number of years, I am looking forward to working with the board and engaging with the 130 plus shows all around Ireland in my new role.

Shows are an important part of rural community life and are a key date in the agricultural calendar. The development and progress that shows have experienced over the last number of years is due in no small part to the commitment, support and hard work by you and a large band of stakeholders, including volunteers, exhibitors, sponsors and funders, competitors, spectators etc. Very sincere thanks to each and all for your support.

The running costs of staging our shows has escalated considerably in recent years. The Irish Shows Association are delighted to be involved with the Dept. of Rural and Community Development and the Dept. of Agriculture, Food and Marine in securing very essential but much appreciated funding, to assist our shows with their running costs. These funds are administered and very efficiently managed by Jim Harrison, National Secretary, and staff on behalf of the Board of the ISA. It is very important that shows are familiar with and very attentive to the funding criteria.

Sincere thanks are also extended to Horse Sport Ireland, FBD Trust and Irish Farmers Journal for all their support, both financial and otherwise.

As you all set out on your planning activities for another show season, I wish you continued success with all your endeavours. Hope the weather allows for a very successful, safe and satisfying show for all.

I look forward to meeting many of you at your great events

Freda Kinnarney
National President ISA

Ardara Show 2026

ACKNOWLEDGEMENTS 2026



Department of Rural and
Community Development



An Roinn Forbartha
Tuaithe agus Pobail



Rialtas
na hÉireann
Government
of Ireland

Tionscadal Éireann
Project Ireland
2040

The Irish Shows Association would like to express our gratitude for the generous grant of one million euro awarded to 120 of our shows by the Department of Rural & Community Development in 2024. The ISA Board extends special thanks to former Minister Heather Humphreys for her invaluable support over the period of the last Government. This funding has made a significant impact, with many shows being able to continue, which otherwise might not have been possible without it. The ISA look forward to collaborate with the new Minister Dara Calleary for Rural and Community Development for funding towards our member shows.

The Irish Shows Association would like to express our gratitude for the grant from the Department of Agriculture, Food and the Marine towards the insurance rebate. This support makes a significant impact on our shows.

The ISA board would also like to acknowledge the Breeders Choice funding to all shows that run cattle classes.

The Irish Farmers Journal and FBD have generously provided sponsorship and advertising support for our Young Stock Person Championship. On behalf of our shows, the Irish Shows Association would like to express our gratitude for their contribution. We also wish to acknowledge the ongoing coverage that the Irish Farmers Journal provides to our shows each year.



Department of
**Agriculture,
Food and the Marine**

An Roinn
**Talmhaíochta,
Bia agus Mara**



Ardara Show 2026

ACKNOWLEDGEMENTS 2026



The Irish Shows Association (ISA) would like to express our sincere gratitude to FBD for their generous annual grant through the FBD Trust. This invaluable support allows us to enhance safety across all our events by providing high-visibility vests, safety signage, and other essential safety equipment. Additionally, we are able to host safety seminars in each of our five regions, further ensuring the well-being of everyone involved. A special thank you to Ciaran Roche, FBD's Risk Manager, for his continued dedication in delivering these vital seminars each year.



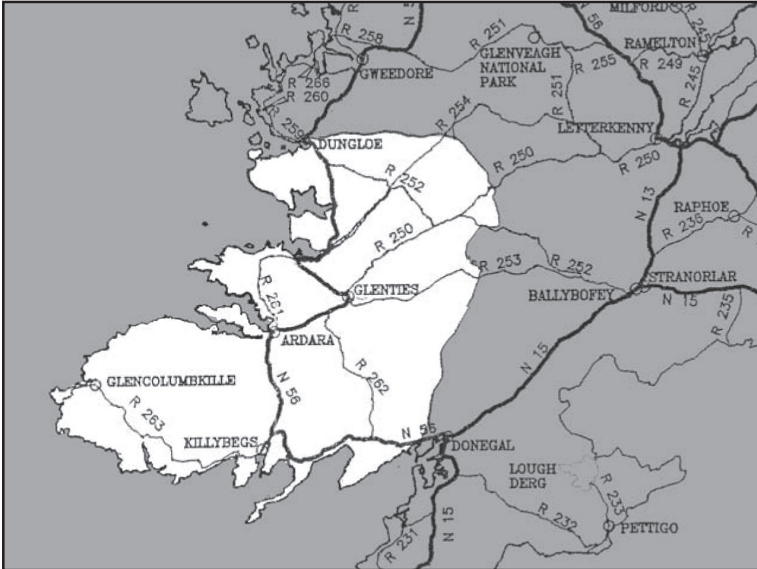
HORSE SPORT
IRELAND

The Irish Shows Association would like to thank and acknowledge the funding from Horse Sport Ireland in partnership with the Department of Agriculture for our horse championships over the years. This support is highly appreciated by the Irish Shows Association and by the dedicated equine breeders who benefit from and continue to support our events.

The ISA would also like to express our sincere gratitude to all the other incredibly generous companies and individuals who sponsor our All-Ireland Championships, as well as our member shows nationwide year after year. Their ongoing support is essential to the continued success and operation of our events.

Ardara Show 2026

Show Area Map (Confined Area)



RULES & REGULATIONS

SHOW AREA DEFINED:

“South-West Donegal:” the name of this Agricultural Show means the area included in the Parishes of Ardara, Glenties, Upper Rosses, Inver, Killybegs (Killaghtee), Kilcar and Glencolumbkille

Competition is Open except where defined as above or confined to Ardara Parish

CATTLE / SHEEP

1. Ownership Duration

Confined cattle exhibits must have been the property of the exhibitor for at least six months before the show date.

1a. All Sheep in the Confined section must be homebred.

2. Commercial Status

All cattle are considered commercial unless otherwise stated.

Ardara Show 2026

3. Calf Entry Restrictions

Calves are not permitted in the “No Permanent Teeth” section.

4. Prize Money Deduction

In accordance with Irish Shows Association rules, 5% of prize money will be deducted from all classes and forwarded to the ISA to help cover costs.

5. Showground Housekeeping

Animals must be in the showgrounds at least 30 minutes before judging, properly haltered and trained

HOME INDUSTRIES (Farm, Garden & Industrial Sections)

1. Eligibility of Exhibits

Exhibits must have been grown or made by the exhibitor.

2. Previous Winners

Prize-winning entries from previous Ardara Shows are not eligible for re-entry in the Industrial Section.

3. Entry Requirements

Exhibitors must ensure their entries are placed in the correct class.

4. Exhibit Placement & Timing

- I. All entries must be in place by the designated time to be judged.
- II. Non-Perishable exhibits can be taken to Marquee on Friday after 6pm for entry on Show Day. Marquee open from 7am day of show for all exhibits and all exhibits to be in place by 9.30am on day of Show for judging that starts at 10am
- III. Only accepted entries by the Secretary/Chief Steward will be judged

5. Exhibit Removal

Exhibits cannot be removed from the marquee before 5 p.m.

GENERAL RULES

Entries & Eligibility

1. Open Competition

Competitions are open unless otherwise specified or limited to Ardara Parish.

2. Entry Refusal

The Chief Steward reserves the right to refuse entries without giving a reason.

3. Entry Requirements

- I. Entries must be received by the closing date with the correct fee, No late entries will be accepted.
- II. Exhibitors must ensure their entries are placed in the correct class.
- III. Any person who has not returned trophies on time will not have their entries accepted.

4. Entry Amendments & Cancellations

- I. The committee may cancel or merge classes with low entry numbers.
- II. Classes may be adjusted at the committee's discretion on the day of the show.

5. Trophies & Prizes

- I. All trophies are perpetual unless otherwise stated.
- II. All prizes must be claimed on show day.
- III. Judges may withhold prizes if exhibits lack merit or award additional prizes for large classes.
- IV. In single-entry classes, judges may award a prize if merit is sufficient.

6. Misconduct & Disqualification

- I. Interference with judges results in disqualification and a potential ban.
- II. False ownership claims on the entry form lead to disqualification.

7. Judging Conduct

- I. Judges' decisions are final.
- II. Where possible Stewards must not accompany judges in sections where they have entries.
- III. Public is not allowed in the marquee during judging.

8. Objections

- I. Must be submitted in writing within 30 minutes of the event's conclusion.
- II. A €50 fee (refundable if upheld) is required.

9. Membership

New members cannot vote until after official acceptance.

10. Liability Disclaimer

The committee accepts no responsibility for loss, damage, or error related to exhibits or cataloguing.

11. Show Changes

The society may postpone the show or parts of it without liability.

12. ISA Championship Rules

Exhibitors must contact the ISA directly for championship information.

13. Admission Charges

- I. All exhibitors must pay admission; this is to support the show.
- II. Entry fees of €80+ include two free show field passes.

For the efficient running of the championships all concerned are requested to read and observe the rules set out below.

GENERAL RULES FOR IRISH SHOWS ASSOCIATION CHAMPIONSHIPS 2026

Eligibility of Shows to host Qualifiers:

Shows wishing to participate in the Championships and be eligible to hold qualifiers must:

1. Have collected the Championship Fund (currently 5%) from Horse, Pony, Cattle, Sheep & Goat class prize money for the previous year and forwarded the amount so collected, in full, to the Irish Shows Association within the stipulated period of not more than 30 days from the date of the show. Alternative methods of meeting this obligation are not acceptable. Any show or competitor in breach of the rules set out will be disqualified from participating or competing in these Championships.
2. Undertake to ensure the correct collection and return of qualifier cards and entry fees.
3. These General Rules and those relating to individual championships (where applicable) should be published in the show schedule and catalogue of the participating shows and must be strictly observed.
4. For horse, pony, cattle and sheep qualifiers, qualifying rounds must be at least 10 days before the date of the final. For indoor, poultry and dog finals, qualifier rounds must be at least 7 days before the date of the final.

Responsibility of Shows holding Qualifying Rounds:

1. Selected Shows should hold a separate class for each qualifier from which the highest placed animals will qualify.
2. Shows must ensure that the qualifiers are held strictly in accordance with the relevant rules.
3. No other sponsor may be involved in qualifying classes.
4. Shows may charge a set entry fee for each qualifying class. The I.S.A. will award a rosette to the successful exhibit(s) on appearance at the final.
5. No show hosting a Championship Final may hold a qualifying class for that championship on the day of the final other than by agreement with the Irish Shows Association.
6. Shows who hold qualifiers for Horses, Ponies, Cattle, Sheep & Goats may ask exhibitors to enter the exhibit in at least one other class at their show on the day. Shows should not undertake to host a qualifier unless they have an equivalent class.

7. Where shows debar class winners from further competitions, this rule must not be applied to qualifiers.
8. Animals qualified for finals are not eligible to enter in any other show class at the show where the final is held, other than a qualifying class for another championship.
9. Shows should appoint competent, well-briefed people to act as stewards, who must ensure that only animals (or other exhibits) which are eligible to compete and whose documentation is in order, are allowed to proceed to the judging ring.
10. On completion of judging, Stewards must inform the successful competitors to visit the Secretary's Office at the show within one hour and complete the necessary paperwork and pay for entry to the final.
11. The show must appoint a well-briefed officer who will be available at the Secretary's Office to assist exhibitors to complete the entry cards for participation in the final and collect the entry fee.
12. **Qualifying cards must be fully completed and the qualifying fee paid on the day of the show.** Once both conditions are met, then qualifying cards may be signed by board members.

Responsibility of Exhibitors:

1. Exhibitors accept that the Judge's decision is final in all cases.
2. Any abuse of Judges will not be tolerated. Where a dispute or case for complaint arises, the matter should only be dealt with under 8 below.
3. Exhibitors should be familiar with the Irish Shows Association Disciplinary Policy as published on our website and annual guidebook.
4. Winners of Qualifiers are themselves responsible for entering their qualifiers (or exhibits) for the final in accordance with the rules above, within one hour of qualifying.
5. Winners of qualifiers will compete in the final.
6. The Irish Shows Association in conjunction with the sponsors reserve the right to alter or amend the rules of the competition as may be necessary where appropriate.
7. Shows and competitors must contact the ISA for details of any championships and not the sponsor involved.
8. Objections must be lodged in writing with the I.S.A. representative at the show and the Show Secretary within half an hour following the completion of judging, together with a fee of €50, or other stated fee, which is refundable in the event of the objection being upheld.

9. Any exhibitor who makes a false declaration or misrepresents a fact regarding themselves or their exhibit is liable to disqualification and/or forfeiture of any prizes awarded.
10. If a qualified exhibitor does not turn up to an ISA final without giving prior notice to the ISA office or to a board member, he or she will incur a financial penalty.

Responsibilities of Shows hosting Championship Finals & All-Ireland Finals:

1. Where shows are paying out prizes for horse, pony, cattle and sheep finals, a deduction of 5% of the prize money will be collected by the show and forwarded to the ISA within 30 days of the Final.
2. Championship finals must start not later than 2pm on the day of the show and the advertised time must be adhered to as far as possible. If necessary, other show classes should be either postponed or relocated to allow for this.
3. Shows should cooperate with ISA personnel and judges appointed to officiate at finals.
4. Selection of judges for All-Ireland championships should be handled by the relevant sub-committee of the board of the ISA.

EXTERNAL DISCIPLINE POLICY

The Irish Shows Association expects and will insist upon appropriate behaviour from all Exhibitors and others participating in any of the activities at our Member Shows and will not tolerate inappropriate behaviour.

Inappropriate behaviour shall include but not be limited to the following:

- Profanity, coarse or vulgar language or gestures towards judges, exhibitors or other Show officials
- Harassment or bullying, including using words or actions that threaten, intimidate or undermine judges or other officials before, during or following Member Show activities.
- Failure to follow rules and/or obey instructions.
- Abusing any animal

Disciplinary Procedure:

Complaints of misconduct against an Exhibitor, Spectator or other participant at an affiliated Show or any event organised by The Irish Shows Association, or alleged breaches of the rules and standing orders of The Irish Shows Association, shall all be

investigated and adjudicated upon by a Disciplinary Committee appointed by the Board of the Irish Shows Association. All complaints must be submitted in writing and must be signed by all parties submitting the complaint. The Disciplinary Committee shall seek to ensure the existence of consistent, effective, fair, and transparent complaint procedures and shall act in accordance with natural and constitutional justice. Hearings of all committees shall be confidential and held in private, unless the committee decides otherwise

Disciplinary Committee:

A Disciplinary Committee shall be established by the Board of the Irish Shows Association to determine alleged misconduct, or alleged breaches of the rules and standing orders of The Irish Shows Association. The Disciplinary Committee shall consist of five (5) persons all being Directors, of the Irish Shows Association. One of these five shall be elected as Chairperson of the Disciplinary Committee. Each member shall be appointed on the basis that he or she is able to hear issues referred to the Disciplinary Committee under these General Rules fairly and impartially. The Disciplinary Committee has the power to hear and determine all issues referred to it in accordance with the General Rules of the Irish Shows Association.

Disciplinary Process:

The Disciplinary Committee shall appoint one of its members as Disciplinary Officer. All alleged complaints of misconduct or breach of General Rules shall be referred to the Disciplinary Officer who will determine if the matter should be referred to the Disciplinary Committee. In making this determination the Disciplinary Officer may consider any evidence he or she deems worthy. The Disciplinary Officer shall have the right to make enquiries of any individuals, seek further information in relation to the matter and seek guidance as he or she shall consider appropriate to determine whether the matter should be investigated further, dealt with otherwise or brought forward as an alleged breach of these General Rules.

Where the Disciplinary Officer determines that a breach of General Rules should be alleged, the Disciplinary Officer shall notify the Secretary of the Irish Shows Association of this decision and the Secretary shall refer the matter to the Chairperson of the Disciplinary Committee. Where the Disciplinary Officer determines that a breach of General Rules should not be alleged, the Disciplinary Officer shall notify the Secretary of the Irish Shows Association of this decision and the Secretary shall take such action as he or she believes appropriate.

Hearing Procedures:

Upon receipt of a referral from the Secretary of the Irish Shows Association, the Chairperson of the Disciplinary Committee, or a Vice-Chairperson, if necessary, shall form a hearing committee to consider the issue. A hearing committee may consist of either three or five persons as the Chairperson or a Vice-Chairperson deems appropriate. A hearing committee will not have powers to award costs. Subject to these General Rules a hearing committee shall have the power to regulate its procedures. The Hearing Committee will appoint, from within its members a person who will be responsible for recording the proceedings of the hearing and for sending a copy of same, duly signed by all members of the hearing committee, to the National Secretary, within 2 days of the hearing.

Any person against whom a complaint has been made shall be entitled to an in-person hearing. Hearings of the hearing committee shall be confidential and held in private, unless the hearing committee decides otherwise. The hearing committee shall have the power to decide on the admissibility, relevance and weight of any evidence and shall not be bound by any legal rules in relation to such matters. Facts may be established by any reliable means, including admissions.

Each party to the proceedings shall have the right to present evidence, make submissions, call witnesses, and cross-examine the witnesses of the other party and, subject to the hearing committee's discretion to accept testimony by telephone, written statement, or submission, whether by fax, email, or other means. The hearing committee, at the request of one of the parties to the proceedings or on its own initiative, may require one or more parties to the proceedings to supply it and/or the other party or parties to the proceedings, within such time as the hearing committee determines, with further particulars of the case of that party, including details of all witnesses that party intends to call at any hearing together with details of the evidence to be given by those witnesses and that party shall comply with that direction. The hearing committee, at the request of one of the parties to the proceedings or on its own initiative, may direct one or more parties to the proceedings to make any property, document, or other thing in that party's possession or under its control available for inspection by the hearing committee and/or any other party and that party shall comply with that direction. Any failure by any party to the proceedings to comply with any requirement or direction of the hearing committee, including those requirements or directions to be complied with within a truncated time schedule, shall not prevent the hearing committee from proceeding and such failure may be taken into consideration by the hearing committee when making its decision. A failure by any party or their representative to attend a hearing after notification shall not prevent the hearing committee from proceeding with the hearing in their absence.

All hearings shall be recorded and the Irish Shows Association shall retain the record. The hearing committee may postpone or adjourn a hearing.

The hearing committee shall have the power, at its absolute discretion, to appoint an expert to assist or advise it. The person chosen as the expert shall not be involved in the matter before the hearing committee and shall be free from any conflict of interest. The decision of a hearing committee shall be final and binding on all parties, unless appealed in accordance with these General Rules. The decision of a hearing committee shall be notified to the Secretary of the Irish Shows Association who shall ensure that the all the necessary parties are notified of the decision within five working days from receipt of the decision from the hearing committee. the Secretary of the Irish Shows Association shall ensure that the decision is enforced.

Penalties:

The hearing committee shall have the power to impose one or more of the following penalties for misconduct or for a breach of these General Rules:-

A formal warning;

A formal reprimand;

A suspension of a person from entering or competing in any competition organised by the Irish Shows Association for a period up to and including one calendar year.

Appeals:

A decision of the Disciplinary Committee may be appealed. An appeal may be lodged by any party to the original decision. A notice of appeal must be made in writing to the Secretary of the Irish Shows Association, within fourteen (14) days of the date of issue of the original decision. Upon receipt of the notice of appeal, the Secretary shall refer the appeal to the Chairperson of The Irish Shows Association who shall form an appeal committee to consider the appeal. The Appeal committee shall consist of three Directors of the Irish Shows Association. The Appeal committee shall not include any members of the Disciplinary Committee who were involved in the hearing at first instance which is the subject of the appeal. Subject to these General Rules the appeal committee shall have the power to regulate its procedures. The Appeal Committee shall have the power to approve, amend or overrule the decisions of the Disciplinary Committee. The appeal committee shall have the power to impose any penalty it deems appropriate upon a person found on appeal to have breached these General Rules or the rules of a show section/ subcommittee. The decision of an Appeal committee shall be final and binding on all parties.

*** Irish Shows Association Notice ***

**Department of Agriculture, Food and the Marine
Certificate of Compliance Requirements**

On the day of the Show, the Certificate of Compliance should be presented to the Show Secretary.

The keeper and the Show Secretary will then sign the Movement.

Notification section of the Certificate which will then **Must** be sent to the local RVO for recording onto the AIM system.

Important Notice

The (name of show) Committee, acting by itself or through its Agents/Officers, reserves the right to reject or cancel any entry or entries made by or on behalf of any person, corporate or other entity and may direct the removal of any animal or other exhibit from the showing ring or display area and/or from the Showgrounds, if the Committee and/or its Agents/Officers shall deem it fit to do so, without offering any explanation or reason for so doing and without incurring any liability whatsoever to any such Applicant/Exhibitor or his/her/its Agent.

Department of Agriculture, Food and the Marine

It is vitally important that all Show Secretaries comply with the rule & make sure to send back the **Certificate of Compliance** to your Local RVO Office within Seven Days of your Show taking place as failure to do so is causing untold problems to exhibitors.

After submissions from affiliated Shows on Judging of Calves & the need judged them by weight rather than by age at Shows

The Irish Shows Association Cattle Sub Committee have put forward the following **recommendation** on use of live weight for calf classes e.g. **Calves under 12 months not to exceed 460 kg (Autumn born calves and Calves under 6 months) it recommends that the weight should not exceed 320kg**

Another suggestion is to use no more than **1.7kg** live weight gain per day from the birth date to the show date.

New Rule for Exhibitors

If a qualified exhibitor does not turn up to an ISA final without giving prior notice to the ISA office or to a board member he or she will incur a financial penalty

**Please Enter
Online at:**

www.ardarashow.com

Ardara Show 2026

Important Notice to Animal Owners involved in showing Animals at Shows

The Irish Shows Association would advise all Animal owners who have their Animals Insured to have the Insurance cover extended to cover them while showing Animals at Shows, it may cost very little or nothing at all depending on who you have Insurance with.

The reason for giving this advice is that if your animal were to injure someone or damage someone's property, and it is established that your animal was out of your control at that time, you may be held responsible or partly responsible for any injury or damage caused, and could end up paying all, or part of any Court Award or settlement reached.

Note for Information regarding Movement of Bovine to Shows

The Department of Agriculture implemented a number of changes on 4th February 2019 which changed the procedures and criteria applicable when applying for a Certificate of Compliance for the movement of cattle. These also impact on the certificate which is required when moving bovine to a Show.

The following sets out the criteria applicable:

- The movement of cattle to and from an Agriculture Show within the State must be recorded on the Animal Identification and Movement System (AIM).
- In line with these changes, specific certificates of Compliance for the “Movement of Bovine from a Single Holding to a Show” must now be requested prior to the movement of animals concerned.
- These certificates can be created by (i) applying on-line using their agfood account or (ii) where the keeper is not on line the certificate can be generated by the local Regional Veterinary Office following receipt of a NBAS31K with issue of the certificate being subject to normal criteria applicable. This form will be available on the Department’s Website and will also be included with the Show Circular when issued.
- When applying for this certificate the destination herd / or Show number is not required. The certificate generated will include an “S” symbol.
- **The Certificate of Compliance for a Show will continue to be valid for a period of up to 30 days.** As is currently the case these can be used for the movement of animals to a number of shows during the validity period of the certificate.
- **Please also note—Calves which are less than 10 days cannot be moved to a Show.**

As is currently the case the Movement Notification Section of the Certificate should be Completed by the Keeper and the Show Secretary who must clearly indicate the Show Number. The Show movement should be recorded on the passport. Ultimate responsibility for fulfilling these requirements lies with the Show Secretary. If the animals move to a herd other than the source herd, the new destination herd must complete and sign the certificate also.

Completed forms should be sent by the Show Secretary to the local RVO within 7 days of the Show.

Animal Identification and Movement (AIM) Division, Department of Agriculture, Food and the Marine.

* Irish Shows Association Notice *

Department of Agriculture, Food and the Marine

Certificate of Compliance Requirements

On the day of the Show, the Certificate of Compliance should be presented to the Show Secretary.

The keeper and the Show Secretary will then sign the Movement.

Notification section of the Certificate **Must** be sent to the local RVO for recording onto the AIM system.

Important Notice

The (name of show) Committee, acting by itself or through its Agents/Officers, reserves the right to reject or cancel any entry or entries made by or on behalf of any person, corporate or other entity and may direct the removal of any animal or other exhibit from the showing ring or display area and/or from the Showgrounds, if the Committee and/or its Agents/Officers shall deem it fit to do so, without offering any explanation or reason for so doing and without incurring any liability whatsoever to any such Applicant/Exhibitor or his/her/its Agent.

Department of Agriculture, Food and the Marine

It is vitally important that all Show Secretaries comply with the rule & make sure to send back the **Certificate of Compliance** to your Local RVO Office within Seven Days of your Show taking place as failure to do so is causing untold problems to exhibitors.

After submissions from affiliated Shows on Judging of Calves & the need judged them by weight rather than by age at Shows

The Irish Shows Association Cattle Sub Committee have put forward the following **recommendation** on use of live weight for calf classes e.g.

Calves under 12 months not to exceed 460 kg (Autumn born calves and Calves under 6 months) it recommends that the weight should not exceed 320kg)

Another suggestion is to use no more than **1.7kg** live weight gain per day from the birth date to the show date.

New Rule for Exhibitors

- If a qualified exhibitor does not turn up to an ISA final without giving prior notice to the ISA office or to a board member he or she will incur a financial penalty
- Pedigree cattle, whether registered or not, cannot be presented in Commercial Cattle Showing Classes.
ISA reserves the right to check the Genotype details

CATTLE (CONFINED)

Prizes: €70, €50, €30

Entry Fee: €10

Cattle judging commences at 10.00 a.m.

No Calves allowed in the no permanent teeth section with the exception of female calves over 360kgs.

ALL CALVES MUST BE EXHIBITOR BRED

- Class 1: Best Breeding Heifer showing no permanent teeth.
1st Prize - Sponsored by Pearse McNamee, Dovea Genetics.
- Class 2: Best Breeding Heifer showing 2 or more permanent teeth.
1st Prize - Sponsored by Pearse McNamee, Dovea Genetics.
If insufficient entries in class 1 or 2, class will be amalgamated

Class 1 & Class 2 not eligible for entry in Class 3

- Class 3: Beef type cow or heifer in milk or in calf open to any breed.
Harold Hennigan Cup
- Class 4: Suckling Cow with own Calf at Foot, Male Calf not exceeding 400kg, female Calf not exceeding 360kg.
Hamilton Baskin Cup
1st Prize - Feed Voucher Sponsored by R Smyth & Sons Ltd.
- Class 5: Charolais Bull Calf, not exceeding 400kg.
Neil Craig Memorial Cup
1st Prize - Feed Voucher Sponsored by R Smyth & Sons Ltd.
- Class 6: Charolais Heifer Calf, not exceeding 360kg.
Billy Mc Nelis Memorial Cup
1st Prize- Feed Voucher Sponsored by R Smyth & Sons Ltd.
If insufficient entries in Class 5 or 6, class will be amalgamated
- Class 7: Best Limousin Calf Male, not exceeding 400kg.
Dinny Mc Ginley Cup
1st Prize-Feed Voucher Sponsored by R Smyth & Sons Ltd

- Class 8: Best Limousin Calf Female, not exceeding 360kg.
John Sharpe Memorial Cup
1st Prize- Feed Voucher Sponsored by R Smyth & Sons Ltd
- Class 9: Best Belgian Blue Calf Male or Female, Male calf weighing between 251kg to 400kg, Female calf weighing between 251kg to 360kg.
Thomas Boyle Memorial Cup
1st Prize- Feed Voucher Sponsored by R Smyth & Sons Ltd.
- Class 10: Best Belgian Blue Calf Male, weighing 250kg or under
Mary Cunningham Memorial Cup
1st Prize – Feed Voucher sponsored by R Smyths & Sons Ltd
- Class 11: Best Belgian Blue Calf Female weighing 250kg or under
Sean Gallagher Memorial Cup
1st Prize - Feed Voucher Sponsored by R Smyth & Sons Ltd.
- Class 12: Best Homebred Animal excluding Calves and Pedigrees
Ciaran Gallagher Haulage Cup
Sponsored by Pod-Trak Ltd.
- Class 13: Best Pair of Animals from one herd, any age, any breed, excluding Pedigree.
Francie McCafferty Cup
Sponsored by Pod-Trak Ltd.

CHAMPION & RESERVE CALF OF CONFINED CLASSES

Champion: John Gallagher Cup
Reserve: Peter Cunningham Memorial Cup
Sponsor: Homeland Agri Ardara

CHAMPION & RESERVE ANIMAL OF CONFINED CLASSES

Champion: Wee Stephen Memorial Cup
Reserve: Dean Boyce Cup
Sponsor: PMC Fencing

Champion Prize: €80 sponsored by: Eoin Gallagher Agri
Reserve Prize: €50 sponsored by Barry Doogan AI Services

CATTLE (OPEN)

Class 14: **Ardara Show Young Stockperson Class**

Age 12-18 years

Entry Fee €5

PRIZE FUND: 1st: €30 2nd: €20 3rd: €10

All entrants to receive a rosette

1. Competition is open to boys and girls aged 12 to 18 years of age.
2. Animals can be any breed male or female and must be leading and must be born after 1st Jan 2026
3. An exhibitor can show an animal belonging to another herd owner
4. Exhibitor will be judged on ability to handle and present the animal to its best advantage in the Show Ring and on their personal presentation.

Class 15: **PRIZE FUND €300** *Sponsored by Ardara Show*

Entry Fee €10

Best Breeding Heifer showing no more than 2 permanent teeth.

PRIZE FUND: 1st: €150 2nd: €100 3rd: €50

Class 16: **PRIZE FUND €700** *Sponsored by Homeland Agri Ardara*

Entry Fee €20

Best Non-Pedigree Male or Female Calf weighing between 251kg - 400kg

PRIZE FUND: 1st: €300 2nd: €200 3rd: €100 4th: €50 5th: €50

Class 17: **PRIZE FUND €700** *Sponsored by Curran Plant Hire*

Entry Fee €20

Best Non-Pedigree Male or Female Calf not exceeding 250kg

PRIZE FUND: 1st: €300 2nd: €200 3rd: €100 4th: €50 5th: €50

COMMERCIAL CHAMPION & RESERVE

Champion Prize: €100 Voucher / Reserve Prize: €50 Voucher

Ardara Show 2026

Class 18:



THE IRISH SHOWS ASSOCIATION AND THE
DEPARTMENT OF AGRICULTURE PRESENTS
THE BREEDER'S CHOICE CONTINENTAL
4* OR 5* BREEDING HEIFER

SPONSORED BY THE DEPARTMENT OF AGRICULTURE

RULES AND CONDITIONS PRIZE FUND €750

1. This competition is open to All Continental Genotype 4* or 5* Breeding Heifers, suitable to make a Suckler Cow.
2. Full tag number must be submitted with entry to ensure that genotype rating can be verified.
3. Heifers may be in calf or maiden. All Heifers must be between 12 months and 24 months of age on the date of the show.
4. Each Heifer can only enter this competition at up to five shows. If a heifer enters more than five shows, any further prizemoney will be forfeited.
5. All Heifers must be halter-trained and led by a competent adult.
6. The foregoing rules should be read in conjunction with ISA General Rules.

Entry Fee: €15

PRIZE FUND: 1st Prize: €250, 2nd Prize: €125, 3rd Prize: €75, 4th-8th Prize: €50
Prize Money will be paid after Showday

PEDIGREE CHAROLAIS SECTION

Sponsored by Irish Charolais Cattle Society & Dawros Bay Hotel

Prizes: 1st €70, 2nd €50, 3rd €30,

Entry Fee: €10

Class 19: Best Pedigree bull calf born between 1st September 2025 and 31st December 2025

Class 20: Best Pedigree heifer calf born between 1st September 2025 and 31st December 2025

Class 21: Best Pedigree bull calf born between 1st January 2026 and 31st May 2026

Class 22: Best Pedigree heifer calf born between 1st January 2026 and 31st May 2026

Class 23: Best Pedigree Charolais Cow or Heifer born on or before 31st August 2025

OVERALL CHAMPION & RESERVE

Champion Prize: €100

/

Reserve Prize: €50

Department of Agriculture, Food and the Marine SPECIFIC REQUIREMENTS – SHEEP

IDENTIFICATION

All sheep must be identified individually with appropriate ear tags issued in accordance with the requirements of the National Sheep Identification System (NSIS).

MOVEMENT DOCUMENTATION

All consignments of sheep being moved must be accompanied by a completed dispatch document. Individual details of each sheep in the consignment must be recorded on the document. Sheep from non-restricted flocks only can be moved to shows. In the case of flocks restricted following diagnosis of scrapie, sheep possessing the ARR/ARR genotype only may be exhibited. The movement of these ARR/ARR genotype sheep must be accompanied by the relevant movement permit (SCR/10), which can be obtained from the local District Veterinary Office in the county where the flock is located.

AIM NOTIFICATION

The movement of sheep to and from an Agricultural Show within the State must be recorded on AIM. This is done using a copy of the owners sheep dispatch document as follows:

1. The owner/keeper presents the signed and completed dispatch document to the show secretary who checks it to ensure that it is completed in full.
2. The show secretary fills in the MART section of the dispatch document with (i) the show number, (ii) the date of the move back to the source holding stamps it with the (iii) show stamp and (iv) signs the dispatch document.
3. The show secretary then forwards the completed pink section of the dispatch document to the local DVO within 7 days of the show movement.
4. The show secretary keeps white copy for his/her records.
5. The source/destination keeper keeps the bottom yellow copy to enter it into their flock register. Ultimate responsibility for fulfilling this requirement lies with the Show Secretary.

FLOCK REGISTER

All movements of sheep to and from shows must be recorded in the keeper's flock register.

EXPORTS TO NORTHERN IRELAND

All sheep must be accompanied by a TRACES intra-community trade certificate for ovine animals. A TRACES message, corresponding with the TRACES certificate, will be sent for each animal or consignment being dispatched to the show (this will be performed by Department officials of the DVO). Exhibitors are advised to contact the show society in Northern Ireland well in advance of any show to determine the suitability of the show for return of animals (e.g. premises and sheep status), and whether the authorities will have officials and veterinary staff present to supervise and process documentation for animals returning to origin.

New Rule for Exhibitors

If a qualified exhibitor does not turn up to an ISA final without giving prior notice to the ISA office or to a board member, he or she will incur a financial penalty

SHEEP (OPEN)

Dyeing of sheep allowed in Open Classes & Confined Classes
Judging commences at 11.00 a.m.

Class 24: THE IRISH SHOWS ASSOCIATION PRESENTS:

THE ECTOFLY EWE LAMB SCOTCH BLACK FACE EWE LAMB FINAL

Sponsored by Midlands Veterinary Ltd

RULES & REGULATIONS

1. Entry is confined to a pair of Ewe Lambs, which will be judged as a pair.
2. All classes are open to pedigree and non-pedigree flocks.
3. A competitor may enter two pairs of Ewe Lambs from his or her flock.
4. Entries to be made direct to the Secretary of the show.

ENTRY FEE: €10 PER PAIR OF EWE LAMBS.

PRIZES FUND

Champion Pair:	5 Ltr of Ectofly, Trophy
Second:	5 Ltr of Ectofly
Third:	2.5 Ltr of Ectofly
Fourth:	2.5 Ltr of Ectofly
Fifth:	2.5 Ltr of Ectofly

Ardara Show 2026

SHEEP (OPEN)

Dyeing of sheep allowed in Open Classes & Confined Classes

Prizes: €50, €30, €20 Entry Fee: €6

BLACKFACE SECTION

Class 25: Best Blackfaced Ewe Lamb

Class 26: Best Blackfaced Ewe, 1 year old

Class 27: Best Blackfaced 1 Crop Ewe rearing a lamb

Class 28: Best Blackfaced Ewe, 2 years and over

Class 29: Best Blackfaced Ram Lamb

Class 30: Best Blackfaced Ram, 1 year old

Class 31: Best Blackfaced Ram, 2 Years and Over

Class 32: Blackfaced Group Class. Best group of 3 only and one animal from any one Blackfaced Class, to be shown in group.

Champion Sheep of Open Blackfaced Classes *Special Rosette*

CROSSBRED SECTION

Class 33: Best Cross-Bred Ewe Lamb

Class 34: Best Cross-Bred Ewe, 1 year old

Class 35: Best Cross-Bred Ewe, 2 years, or over

Class 36: Best Cross-Bred Factory Lamb, 45kg and under on day of show
(If overweight, lamb will be shown in Butchers Class)

Class 37: Best Butchers Lamb, 46kg and over

Class 38: Best Rare Breed - Excluding Pedigrees

(If Class is large it will be split at the Discretion of Chief Steward/Secretary)

Champion Sheep of Open Cross-Bred Classes *Special Rosette*

LANARK SECTION

Class 39: Best Lanark Ewe Lamb

Class 40: Best Lanark Ewe, 1 year old

Class 41: Best Lanark Ewe, 2 years or over

Class 42: Best Lanark Ram Lamb

Class 43: Best Lanark Ram, 1 year & over

Champion Sheep of Open Lanark Classes *Special Rosette*

NORTH COUNTRY CHEVIOTS SECTION

Sponsored By C. Gallagher Haulage

Class 44: Best Cheviot Ewe Lamb

Class 45: Best Cheviot Ewe, 1 year old

Class 46: Best Cheviot Ewe, 2 years or over

Class 47: Best Cheviot Ram Lamb

Class 48: Best Cheviot Ram, 1 year & over

Champion Sheep of Open North Country Cheviot Classes *Special Rosette*

WICKLOW CHEVIOTS SECTION

Sponsored By Pedigree Wicklow Cheviots Society

Class 49: Best Cheviot Ewe Lamb

Class 50: Best Cheviot Ewe, 1 year old

Class 51: Best Cheviot Ewe, 2 years or over

Class 52: Best Cheviot Ram Lamb

Class 53: Best Cheviot Ram, 1 year & over

Champion Sheep of Open Wicklow Cheviot Classes *Special Rosette*

SWALEDALE SECTION

- Class 54: Best Swaledale Ewe lamb
- Class 55: Best Swaledale Ewe, 1 year old
- Class 56: Best Swaledale Ewe, 2 years or over
- Class 57: Best Swaledale Ram Lamb
- Class 58: Best Swaledale Ram, 1 year old
- Class 59: Best Swaledale Ram, 2 year & Over

Champion Sheep of Open Swaledale Classes *Special Rosette*

DUTCH SPOTTED SECTION

Sponsored By Irish Dutch Spotted Sheep Association

- Class 60: Best Dutch Spotted Pedigree Ewe Lamb
- Class 61: Best Dutch Spotted Pedigree Ram Lamb
- Class 62: Best Dutch Spotted Ewe, 1 year old
- Class 63: Best Dutch Spotted Ewe, 2 year & Over

Champion Sheep of Open Dutch Spotted Classes *Special Rosette*

PEDIGREES SECTION • No Dutch Spotted in Pedigree Section

- Class 64: Best Pedigree Ram Lamb
- Class 65: Best Pedigree Ewe Lamb
- Class 66: Best Pedigree Ewe, 1 year old
- Class 67: Best Pedigree Ewe, 2 year & Over
- Class 68: Best Stock Ram excluding Blackface

Champion Sheep of Open Pedigrees Classes *Special Rosette*

TRADITIONAL PERTH TYPE SHEEP (LONGWOOL)

- Class 69: Best Ewe lamb
- Class 70: Best Ewe, 1 year old
- Class 71: Best Ewe, 2 years or over
- Class 72: Best Ram Lamb
- Class 73: Best Ram, 1 year & over

Champion Sheep of Open Longwool Classes *Special Rosette*

Ardara Show 2026

SHEEP (Confined)

Dyeing of sheep allowed in Confined Classes

(Confined to Show Area)

All Sheep in the confined section to be homebred

All Sheep to be Tagged - No Exceptions

Prizes: €40, €25, €15

Entry Fee: €6

BLACKFACE SECTION

- Class 74: One Blackfaced Ewe Lamb
Pauric Breslin Memorial Cup
- Class 75: One Blackfaced Ewe, 1 year old
- Class 76: One Blackfaced Ewe, 2 year or over
- Class 77: One Blackfaced Ram Lamb
- Class 78: One Blackfaced Ram, 1 year old
- Class 79: One Blackfaced Ram, 2 years & Over

Champion Sheep of Confined Blackfaced classes

Danny and Philip Shovlin Memorial Cup

Special Rosette

Sponsored by Homeland Agri Ardara & Nutrias Animal Feeds

CROSSBRED SECTION

- Class 80: One Crossbred Ewe Lamb not exceeding 45kg
- Class 81: One Crossbred Ewe Lamb exceeding 46kg
- Class 82: One Crossbred Ewe, 1 year old
- Class 83: One Crossbred Ewe, 2 year or over
- Class 84: One Best Factory Lamb under 45kg
- Class 85: One Best Butchers Lamb over 46kg
- Class 86: Best Pair of Replacement Ewe Lambs not exceeding 46 Kilos

Champion Sheep of Confined Cross-Bred Classes

John Mc Nelis, Mac Plant Hire Perpetual Cup

Special Rosette

Ardara Show 2026

SHEEPMANSHIP & YOUNG HANDLERS

(All entrants will receive a rosette)

Prizes: Trophies

Entry Fee: €5

Competitors should be:

- Show the ability to control the sheep in the ring
- Exhibit it to the judge and answer questions on the breed, age, care and welfare of their sheep

Exhibitor can use a Ewe or Ram Lamb

Class 87: Junior Sheepmanship Class - for competitors in National School.

Class 88: Senior Sheepmanship Class - for competitors in Secondary School.

PLEASE NOTE: Exhibitors should be showing there family flock

ALL ENTRANTS WILL RECEIVE A ROSETTE FOR TAKING PART

YOUNG HANDLERS SECTION

Free Entry - Enter on the day

*Open to all young Sheep Farmers that is new to Sheep Farming.
Sheep do not need to belong to exhibitor – it can be borrowed.*

Class 89: Best Ewe/Ram Lamb Exhibitor - National School age

Class 90: Best Ewe/Ram Lamb Exhibitor - Secondary School age

ALL ENTRANTS WILL RECEIVE A ROSETTE FOR TAKING PART

POULTRY SECTION

Judging will commence at 10:30am Sharp

The running of this section will be dependent on the government advice regarding avian Influenza

Prizes: 1st €15 2nd €10 3rd €7

Entry Fee: €3

Class 91: Best Large Hen

Class 92: Best Large Rooster

Class 93: Best Bantam Hen

Class 94: Best Bantam Rooster

Class 95: Best Large Drake

Class 96: Best Large Duck

Class 97: Best Rare Breed

Class 98: Best True Bantam

Class 99: Best Crossbred Hen

Class 100: Best Juvenile Exhibit confined to under 12 years of age.
(2 Entries max)

Class 101: Best Juvenile Exhibit confined to 13 to 18 years of age.
(2 Entries max)

Best in Show
Lakeside Farm Cup

MARQUEE

Judging Commences at 10.00 a.m.

Prizes: €15, €10, €7

Entry Fee: €3

HONEY

Class 150: Three sections of honey, evenly coloured, of any colour.

Class 151: Jar of Honey

VEG. & FARM PRODUCE (OPEN)

Prizes: €15, €10, €7

Entry Fee: €3

Highest total points in Classes 152-180 – H F Maloney Cup

Class 152: Best Eating Apples x 5

Class 153: Best Cooking Apples x 5

Class 154: Best Punnet of Any Variety of Berries - Has to be same type.

Class 155: Truss of Tomatoes

Class 156: Any other Fruit not listed

Class 157: Collection of Fruit - Home Grown not more than 3

Class 158: Two Heads of Lettuce, crisp headed

Class 159: Two Heads of York cabbage

Class 160: Two Heads of Cabbage – Any Variety

Class 161: Six Early Potatoes

Class 162: Six Late Potatoes

Charlie Deane Memorial Trophy

ENTRY FORMS

Ardara Show 2026



Ardara Show 2026

- Class 163: Kerr's Pinks Only
Tommy Hamilton Cup
- Class 164: Half Dozen Shallots
- Class 165: Three roots of Beetroot
- Class 166: Best five seed grown Onions (including sets)
- Class 167: Best Twelve Pods of Peas
- Class 168: Best Cauliflower
- Class 169: Three Roots Parsnips
- Class 170: Three Roots Carrots
- Class 171: Three Stalks Rhubarb
- Class 172: Best Head of Broccoli
- Class 173: Best Wonky Veg - Enter on the Day - Any Variety
- Class 174: Exhibit of Swedes, Three roots
- Class 175: Two heads of Lettuce, Cabbage headed
- Class 176: Sod of Pasture – Not exceeding 12" X 12"
- Class 177: Sheaf of Oats
- Class 178: Tray of Garlic
- Class 179: Best Collection of Fruit & Vegetables.

(Not more than 7 and less than 5, Size to be a 60cm square or smaller.)
Presentation will be taken into account.

MUST BE GARDEN GROWN

Alphonsus Gildea Memorial Cup

- Class 180: Any other vegetable not listed above
- Class 181: Six White Hen Eggs
- Class 182: Six Brown Hen Eggs
- Class 183: Six Duck Eggs

FLOWERS (OPEN)

Hilda Hanlon Cup

Flowers must be home-grown.

Prizes: €10, €7, €5

Entry Fee: €3

Class 184: Vase of Gladioli, 6 Spikes.

Annie Deane Memorial Vase

Class 185: 5 Blooms of Large Flowering Dahlia

Class 186: 5 Cactus Dahlia

Class 187: 6 Stems of Ball or Pom Pom Dahlia

Class 188: Vase of 6 Roses. (Any Variety)

Nancy Yates Perpetual Cup

Class 189: Vase of Sweet Pea, 12 Spikes

Class 190: Best Specimen of Begonia

Class 191: Best Collection of Home Grown Flowers

Class 192: Best Mini Arrangement of Flowers for decorating purposes
(not exceeding 9" in width)

Joyce Classan Memorial Cup

Class 193: 3 Stems of Hydrangrea

Class 194: Best potted Garden Sunflower

Class 195: Collection of Wild Flowers

Margaret Slowey Memorial Cup

Class 196: Rose of the Show, 1 Bloom (1 prize only)

Terence Slowey Perpetual Rose Bowl

**The Courthouse
Restaurant & Bakery**

BAKING

Prizes: €15, €10, €7

Entry Fee: €3

**The Courthouse
Restaurant & Bakery**

Sponsored by The Courthouse Restaurant and Bakery

Exhibitor gaining the most points in the home baking section,
Classes 197 - 227, will be presented with The Nancy Solan Cup

All bread & Cakes must be in a minimum of 6" square, round or
loaf tin only unless otherwise stated below

Class 197: Soda Bread

Milford Perpetual Cup

Class 198: Soda Bread with Fruit

Gallagher's Bakery Cup

Class 199: Brown Bread

Beatrice Egan Cup

Class 200: Treacle Bread

Class 201: Banana Bread

Class 202: 6 Potato Cake

Class 203: 6 Boxty

Class 204: 6 Wheaten Scones

Class 205: 6 White Soda Scones

Class 206: 6 any Variety of Scones

Class 207: Porter Cake

Class 208: Tea Brack

Class 209: Boiled Cake

Class 210: Cherry Cake

Class 211: Ginger Cake

Class 212: Madeira Cake
Marion Gallagher Cup

Class 213: Fruit Cake, Light.
Nuala Walsh Memorial Cup

Class 214: Marble Cake

Class 215: Sponge Sandwich or Jam Roll
Aisling House Trophy

Class 216: Coffee Sponge (Not Decorated)

Class 217: Best Chocolate Cake

Class 218: Lemon Drizzle Cake (Loaf Tin Acceptable)
Kenny Perpetual Cup

Class 219: Best Decorated Cake

Class 220: Apple Tart, Shortcrust

Class 221: Any Variety Fruit Tart

Class 222: Victoria Sandwich
Andy Rann Memorial Trophy

Class 223: Cheesecake, Any variety

Class 224: 6 Chocolate Brownies

Class 225: 6 Caramel Squares

Class 226: 6 Decorated Cupcakes

Class 227: Stack of Pancakes no more than 3
Kenny Perpetual Cup

Class 228: Best Failed Baking attempt - Enter on the day any variety



JAM MAKING

1lb Pot

Prizes: €15, €10, €7

Entry Fee: €3



Sponsored by Moran's Mega Jam

Exhibitor gaining most points in the Jam section classes 229-237, will be presented with The Nan Mc Gill Perpetual Memorial Cup

Class 229: Homemade Pot of Blackcurrant Jam

Class 230: Homemade Pot of Gooseberry Jam

Class 231: Homemade Pot of Rhubarb Jam (with or without ginger)

Class 232: Homemade Pot of Marmalade

Class 233: Homemade Pot of Raspberry Jam

Class 234: Homemade Pot of Strawberry Jam

Class 235: Homemade Pot of Blackberry Jam

Class 236: Homemade Pot of Jam (Any Variety, Not Specified)

Class 237: Homemade Pot of Chutney (Any Variety, Not Specified)



Ardara Show 2026

KNITTING

Prizes: €15, €10, €7

Entry Fee: €3

Exhibitors gaining the most points in the Knitting Section Classes 238 to Class 244 will be presented with a token from John Molloy Woollen Mills

Class 238: Ladies or Gents Sweater/Cardigan-Double Wool
C. Kennedy & Sons Cup

Class 239: Hand-Knitted Hat – Aran Design.

Class 240: Pair of Socks – Any wool, Plain or Fancy

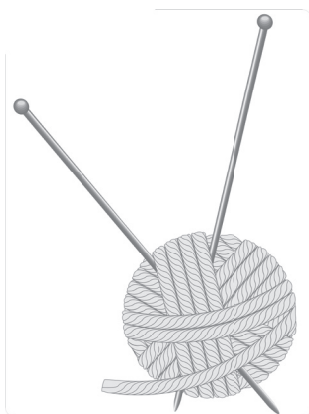
Class 241: Best Hand knitted Cuddly Toy

Class 242: Best Hand knit Baby outfit

Class 243: Best Hand knitted Blanket/Throw

Class 244: Any Article in knitting not specified above

Class 245: U18 Class - Any Article of Knitting/Needlework or Crochet



NEEDLEWORK (OPEN)

Prizes: €15, €10, €7

Entry Fee: €3

Exhibitors please note: Exhibits must be entrants' own work and must not have been exhibited at any previous Ardara Show. Needlework must be unframed for judging.

The Embroiderers Cup for best overall article (Classes 246 - 252)

Class 246: Counted thread work e.g., drawn thread, pulled fabric, cross stitch, black work, hardanger

Class 247: Patchwork Quilt Hand or Machine sewn, quilted or unquilted

Class 248: Patchwork any article

Class 249: Patchwork, Baby Blanket, Cot Size

Class 250: Any Variety Fabric Craft e.g. Cuddly Toy

Class 251: Free style hand embroidery

Class 252: Best article made from preloved materials

IRISH CROCHET (OPEN)

Prizes: €10, €7, €5

Entry Fee: €3

The Dorthea Shovlin Cup for best overall article (Classes 253 - 254)

Class 253: Any Article in Cotton Crochet

Class 254: Any Article in Wool Crochet

ARTS & CRAFTS HAND-MADE (OPEN)

Prizes: €15, €10, €7

Entry Fee: €3

Exhibitors gaining the most points in the Tweed Section
Classes 255 to Class 261 will be presented with a token from
John Molloy Woollen Mills

Please keep exhibits to 60cms x 60cms due to space restrictions

Class 255: Irish Souvenir

Class 256: Best Example of Artistic Woodwork
Eric Hadden Memorial Cup

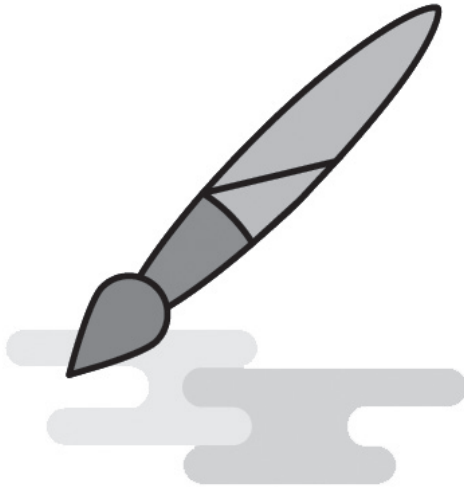
Class 257: Six Hand-cut Turf

Class 258: Clew of Rope

Class 259: St. Bridget's Cross
Ted Breslin Memorial Bronze St Brigid's Cross

Class 260: Best Length of Handwoven Donegal Tweed

Class 261: Best article made from Tweed



Ardara Show 2026

THE IRISH SHOWS ASSOCIATION &
BALLYSHANNON AGRICULTURAL SHOW

PRESENT

**THE ALL IRELAND TRADITIONAL
HANDMADE CRAFT FINAL**

Sponsored by: White Hotel Group, Head Office, Ballyshannon, Co. Donegal

RULES AND CONDITIONS

1. All items must be the sole work of the exhibitor.
2. **Each exhibit must consist of 1 Article from point A plus 1 other article from points B, C or D making - Total of 2 Articles:**
 - a) Any article using tweed e.g. Picture (Min Size 12"x12" - Max Size 18"x18" excluding the frame and mount), Cushion (Min Size 16"x16" - Max Size 18"x18") or skirt (Adult size only)
 - b) Any article in coloured or self-coloured embroidery made in the current year.
 - c) Hand Knit cardigan lumber jacket or jumper, (Adult size only).
 - d) Any article in cotton crochet using no thicker than a No 20 cotton thread.
3. **All the above to be made in the current year**
4. The items to be displayed as one exhibit
5. **Any item the judge feels is produced by any other method other than hand shall be disqualified.**
6. A special class will be held at each qualifying show.
7. **Two entries** may qualify from each qualifying show for the final, if judges agree that the standard is high enough a second entry may be qualified. The Qualifiers from each of these shows will go forward to the final to be held at the **Ballyshannon Agricultural Show, on Sunday 16th August.**
8. Each of the successful qualifiers will receive a rosette on appearance at the final.
9. Judge's decision will be final at all stages of the competition.
10. Exhibits are displayed at owners risk
11. The foregoing rules should be read in conjunction with ISA General rules, together with Ballyshannon Show Rules.
12. Exhibits must be in place for judging by 10.30am on Sunday 16th August 2026.
13. Exhibits cannot be removed from final before 4.30pm.
14. An exhibitor can only qualify **one exhibit** for the All-Ireland final

**Its important exhibitors check measurements
stated under the Rules & Conditions**

Ardara Show 2026

PRIZES

1st €300 & Perpetual Trophy
2nd €200 – 3rd €100 - 4th €60 - 5th €50 - 6th €40

Entry fee: To qualifying Show €3 / To final €6

QUALIFYING SHOWS

Ardara	Castlerea	Meenacross
Arva	Castlewellan	Mullingar
Athenry	Clogher Valley	Nobber
Ballymoney	Clonmany	Oldcastle
Bonniconlon	Dungarvan	Saintfield
Cabery	Glencolmcille	Tullamore
Carnew	Gorey	
Castleblayney	Manorhamilton	

FINAL: BALLYSHANNON SHOW Sunday 16th August 2026

PAINTING (OPEN)

PAINTINGS MUST BE ABLE TO BE HUNG

Prizes: €15, €10, €7

Entry Fee: €3

Best Overall Painting, Charles Mc Hugh Memorial Cup

Class 262: Any Subject Watercolour Painting

Class 263: Any Subject Oil Painting

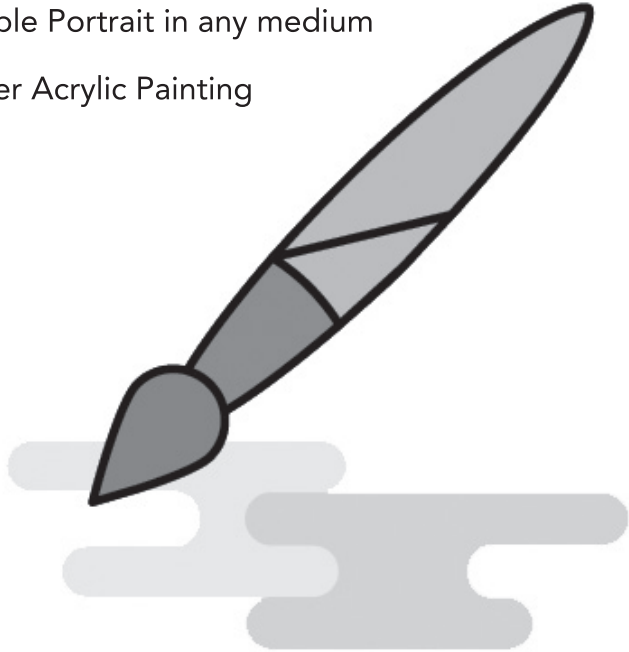
Class 264: Best example of Freehand Drawing or sketching

Class 265: Any Modern Art / Abstract

Class 266: Any Animal Portrait in any medium

Class 267: Any People Portrait in any medium

Class 268: Any Other Acrylic Painting



Ardara Show 2026

PHOTOGRAPHY (AMATEURS)

CANVAS WILL NOT BE ACCEPTED

ALL PHOTOS TO BE EITHER 6" x 4" OR 7" x 5"

Prizes: €15, €10, €7

Entry Fee: €3

A prize of €25.00, sponsored by Kathleen Slowey will be awarded for the best photograph overall, Classes 269 to 276 inclusive.

Framed or Studio Photographs will not be Judged.

Limited to 1 photo per class

Class 269: Best Colour Photograph, animal or wildlife (open)

Class 270: Best Scenic Photograph taken within Ardara Parish

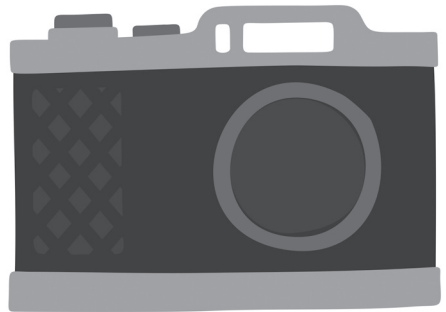
Class 272: Items of Local interest, black and white
Place must be named.
(Confined to Parish)

Class 273: Farm Home Scene. (Colour, Open)

Class 274: Farm Portrait, Black and White

Class 275: Best colour portrait

Class 276: Postcard View. Approx: 6"
Pat Slowey Shield



THE IRISH SHOWS ASSOCIATION & TYDAVNET SHOW
PRESENT



**ALL IRELAND PHOTOGRAPHY
CHAMPIONSHIP**

Sponsored by: **Breffni Landscapes**

PRIZE FUND €500

RULES AND CONDITIONS

1. Theme: **“Natural Landscape of Ireland”** (scenery)
2. The competition is confined to all Amateurs.
3. Photographs may be of any format, i.e. digital or film, black and white or colour.
4. Photographs must **Not** be framed or mounted
5. Photographs must not be digitally enhanced but must have border.
6. Size of photograph to be an A5 including border.
7. A qualifying class will be held at each show
8. **Two exhibits** may qualify from each show if the standard is high enough.
9. All photographs must have the class number and exhibit number on the back of the photograph.
10. Exhibits are displayed at the owner’s risk
11. The Judge’s decision is final.
12. An exhibitor can only qualify **one exhibit** for the All-Ireland final

These rules to be read in conjunction with ISA Rules

PRIZES

1st €150 -2nd €120 – 3rd €80 – 4th €50 – 5th to 8th €25 each

Entry fee: To qualifying Show: €3 To final: €6

QUALIFYING SHOWS

Adamstown	Clonmany	Limavady
Ardara	Cork	Longford
Armagh	Corofin	Lurgan
Arva	Crossmolina	Marina Fay
Athlone	Enniscrone	Midleton
Ballymoney	Ennistymon	Mullingar
Carbery	Erris	Nobber
Carnew	Flavours of Fingal	Oldcastle
Castleblayney	Granard	Roundwood
Castlewellan	Gorey	
Clogher Valley	Grange	

FINAL: TYDAVNET SHOW Saturday 15th August 2026

Ardara Show 2026

CHILDRENS SECTION (OPEN)

Prizes: Rosettes & Surprises!

Entry Fee: €2

CONFINED TO 8 YEARS OF AGE OR UNDER

Class 277: Best example of craftwork.

Class 278: Best Poster, any subject. (Not larger than A3)

Class 279: Painting in Watercolour. (Not larger than A3)

Class 280: Drawing in Pencil, Markers or Crayons. (Not larger than A4)

Class 281: Best specimen of Handwriting. (Not larger than A4)

Class 282: Best Article made from Lego or similar material.

Small kit only - 30 x 30cm = 1 base plate

Class 283: Best Article made from Lego or similar material.

Can be up to 60 x 60cm = More than 1 base plate less than 4

Class 284: Best non-kit article from Lego

Not exceeding 50cms X 50cms

Class 285: Best Decorated Gingerbread Man.

Class 286: Best Decorated Wellington Boot.

Class 287: Best Fruit & Veg Man

Class 288: Best painted stone not bigger than 6 inches

Class 289: Best Potato Head

CONFINED TO 12 YEARS OF AGE OR UNDER

Class 290: Best example of craftwork.

Class 291: Best Poster, any subject. (Not larger than A3)

Class 292: Painting in Watercolour. (Not larger than A3)

Class 293: Drawing in Pencil, Markers or Crayons. (Not larger than A4)

Class 294: Best specimen of Handwriting. (Not larger than A4)

Class 295: Best Article made from Lego or similar material.

Small kit only - 30 x 30cm = 1 base plate

Class 296: Best Article made from Lego or similar material.

Can be up to 60 x 60cm = More than 1 base plate less than 4

Class 297: Best non-kit article from Lego

Not exceeding 50cms X 50cms

OPEN TO EVERYONE UNDER 18 YEARS OF AGE

Class 298: Best Decorated Gingerbread Man.

Class 299: Best Decorated Wellington Boot.

Class 300: Best Fruit & Veg Man

Class 301: Best painted stone not bigger than 6 inches

Class 302: Best Potato Head

Class 303: Best Anti-Litter Poster. (Not larger than A3)

The Ardara Tidy Towns Cup.

To be confined to the Ardara Parish

Class 304: Photography any subject. (No larger than 7" x 5")

Class 305: Tastiest Queen cakes – Decorated

Class 306: Tastiest Queen cakes – Not Decorated

Class 307: Tastiest White soda scones.

Class 308: Best Collection of Wild Flowers.

Class 309: Best example of Craftwork

Sorcha Keane-Breslin Memorial Cup.

Class 310: Best Fruit and Veg Man

Class 311: Best Potato head

Class 312: Best Ardara show Poster

Class 313: Drawing in Pencil, Marker, or Crayons

Not larger than A4

Class 314: Best Article made from Recycled Material

ADDITIONAL NEEDS SECTION

Prizes: Trophies/Plaques

Entry Fee: Free

Class 315: Drawing in Watercolour or Crayons, for children up to 10 Yrs.

Class 316: Drawing in Watercolour or Crayons, for children up to 15 Yrs.

Class 317: Any Article of Woodwork.

Not exceeding 60cms X 60cms

Class 318: Best Bunch of Wild Flowers.

Class 319: Best Lego – Any article

Class 320: Best Painting by numbers

Class 321: Best Photography any subject. (No larger than 7" x 5")

Class 322: Any article of Craft work

Not exceeding 60cms X 60cms

Class 323: Any Painting (Adult Class).



DOG SHOW

Sponsored by Pedro Dog Food
A Fun dog Show will be held at 2pm.
Entries will be taken from 12:30pm.

Entry Fee €3

All dogs must be kept on leads, and any dogs showing aggressive behaviour will not be allowed in the ring.

NO DOGS ALLOWED NEAR LIVESTOCK RINGS DUE TO SAFETY REASONS

Classes for Non-Pedigree Dogs:

- 400. Any type Male Non Pedigree Dog
- 401. Any type Female Non Pedigree Dog
- 402. Any type Non-Pedigree Dog open - **Dulse & Carrageen Cup**
Prizes for 1st, 2nd & 3rd - *Sponsored by Eddie Cunningham*

Classes for Pedigree Dogs:

- 403. Any type terrier, toy or utility - **Woof & Wags Kennel Plaque**
Sponsored by Sandra Dunleavy
- 404. Any type working, pastoral or sporting.
- 405. Any type hound.
- 406. Any type gun dog - **Downstrands Cup**

Open Classes:

- 407. Best Child Handler (less than 16 years old)
Trophy sponsored by Marty Potts
- 408. Best Adult Handler
- 409. Best Veteran dog (over 8 years old)
- 410. Best Rescue Dog
Sponsored by John and Mary Couzens

Pedro Top Dog of Show (open to winners of classes 400-406)

Ardara Show 2026

NO SELLING OF
DANGEROUS
GOODS ON
TRADE STANDS